

# ESMO Recommendations for Diagnosis and Staging of Metastatic Non-Small-Cell Lung Cancer

Lung cancer is the leading cause of cancer death for men and women worldwide<sup>1</sup>

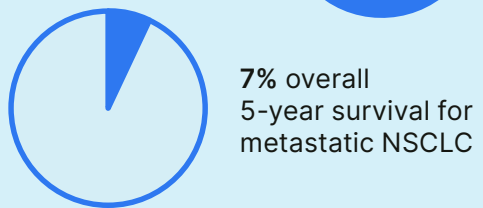
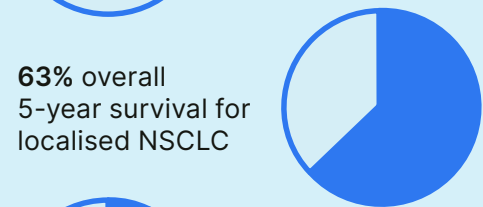
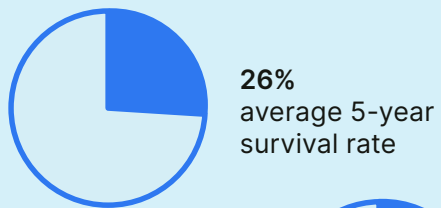


1.8 million deaths worldwide from NSCLC in 2020

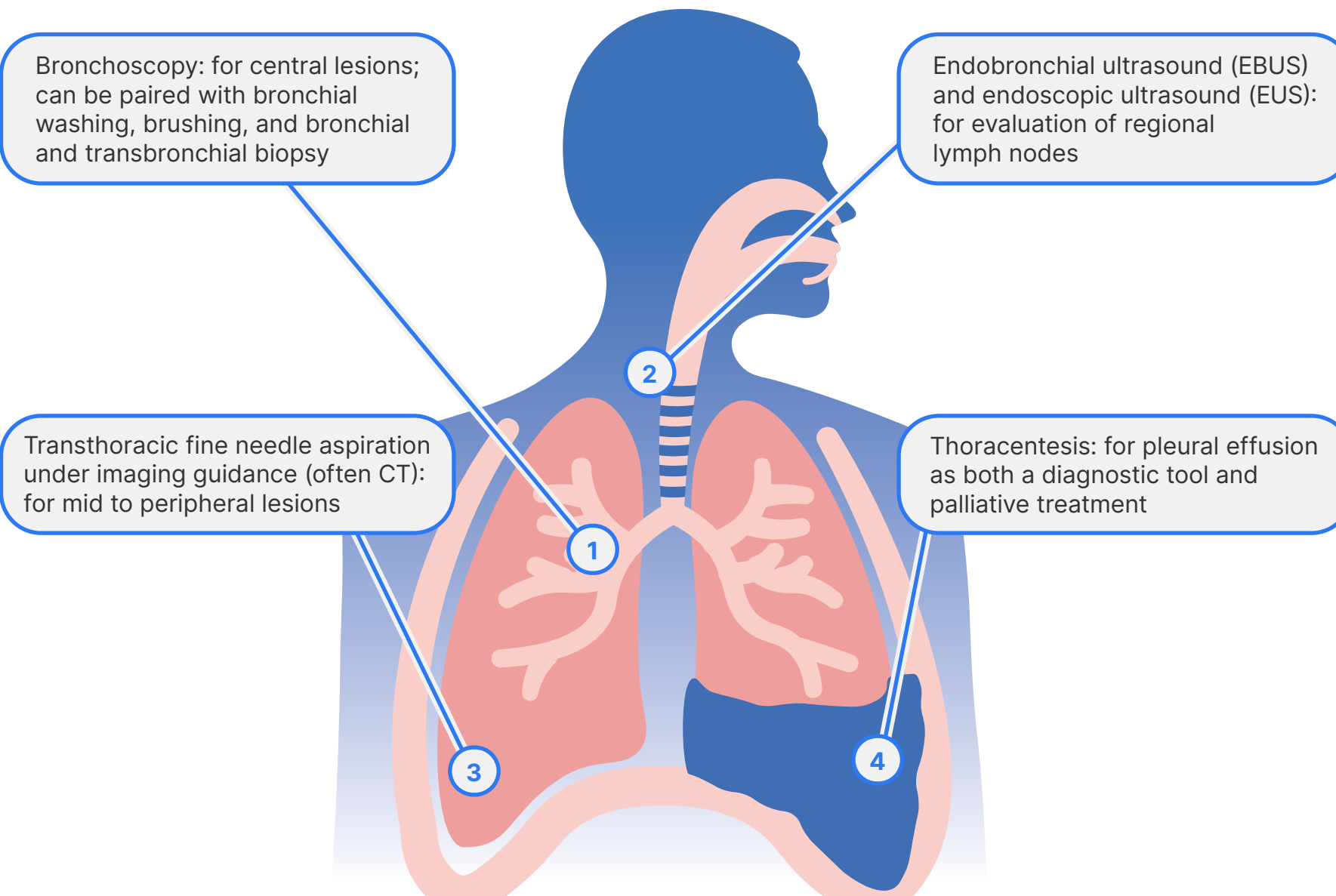


82% of lung cancer diagnoses in the USA are NSCLC

## 5-year survival:



## Choose the most appropriate procedure to improve diagnostic yield<sup>2</sup>



Collaboration between pathologists and procedure performers improves diagnostic yields compared to blind biopsies.

Where these methods have not provided accurate diagnosis, more invasive surgical options include mediastinoscopy, mediastinotomy, and thoracoscopy.

### References

1. Cancer Net. Lung Cancer - Non-Small-Cell: Statistics. 2022. Available at: <https://www.cancer.net/cancer-types/lung-cancer-non-small-cell/statistics>. Last Accessed: 5 August 2022.
2. ESMO. Metastatic non-small cell lung cancer: ESMO Clinical Practice Guidelines for diagnosis, treatment and follow-up. 2018. Available at: <https://www.esmo.org/content/download/347819/6934778/1/ESMO-CPG-mNSCLC-15SEPT2020.pdf>. Last Accessed 5 August 2022.
3. UICC. What is the TNM Cancer Staging System? 2022. Available at: [https://www.uicc.org/resources/tnm?gclid=Cj0KCQjw\\_7KXBhCoARIsAPdPTfjU6RNZfqr8AuTbMTIjwSjC6ZMvC80IKT7FTuEPrOQg-PrZ\\_vx3-CAIaAqoJEALw\\_wcB](https://www.uicc.org/resources/tnm?gclid=Cj0KCQjw_7KXBhCoARIsAPdPTfjU6RNZfqr8AuTbMTIjwSjC6ZMvC80IKT7FTuEPrOQg-PrZ_vx3-CAIaAqoJEALw_wcB). Last Accessed 5 August 2022.

## Steps for accurate staging<sup>2</sup>

### History:

Including smoking history, comorbidities, weight loss, performance status, and physical examination.



### Pathology:

Haematology, renal and hepatic functions, and bone biochemistry. Use of serum tumour markers is not recommended.



### Imaging:

Contrast-enhanced CT of chest and upper abdomen. CNS MRI recommended for all metastatic disease and all patients with neurological symptoms. PET-CT recommended for detecting bone metastasis.



### Classification:

NSCLC is staged according to the Union for International Cancer Control (UICC) TNM Classification of Malignant Tumours.<sup>3</sup>

