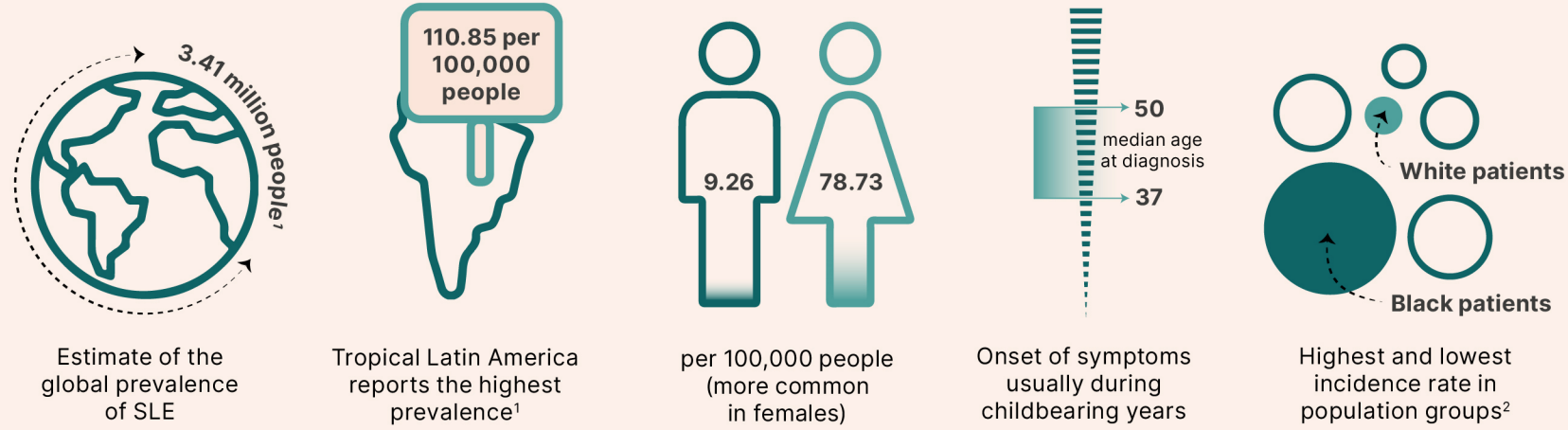




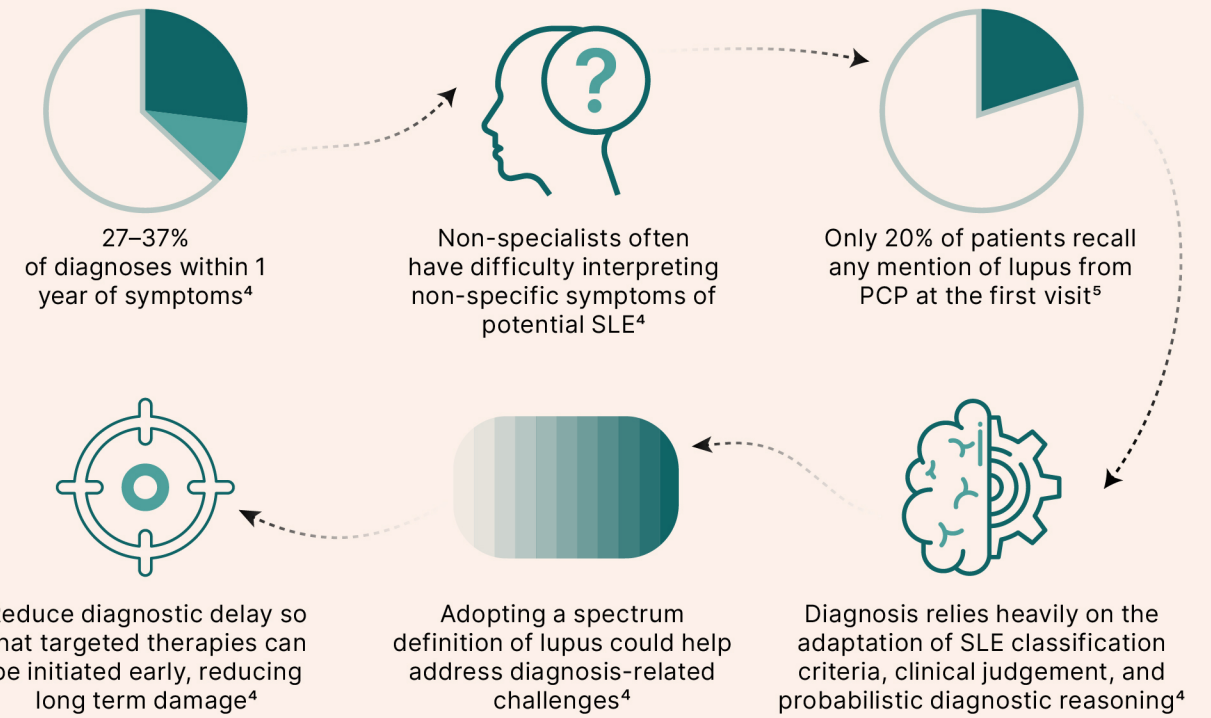
# SLE: Diagnosis Ambiguity and Recommendations for the Future

Citation: EMJ Rheumatol. 2023; DOI/10.33590/emjrheumatol/10300882. <https://doi.org/10.33590/emjrheumatol/10300882>

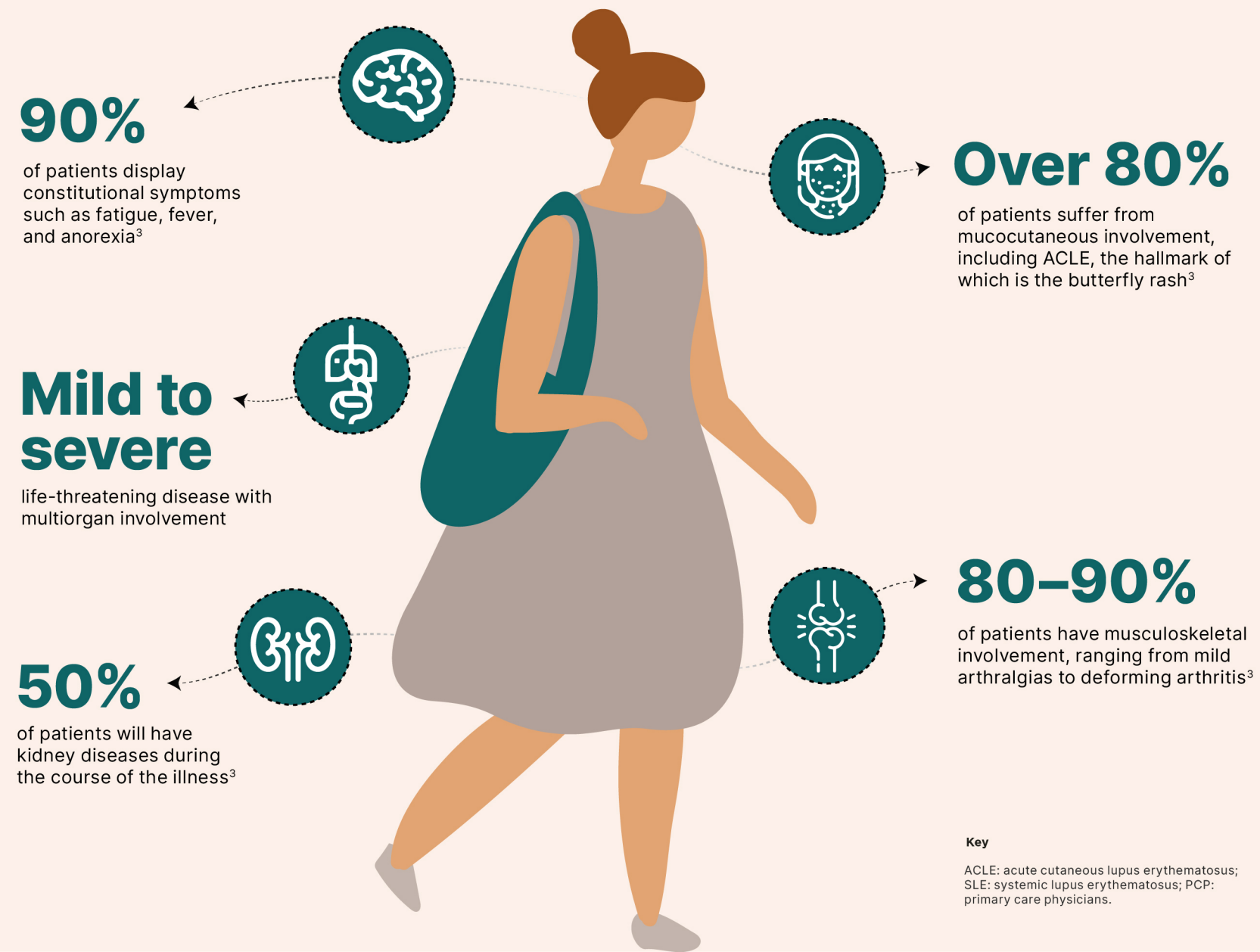
## Epidemiology



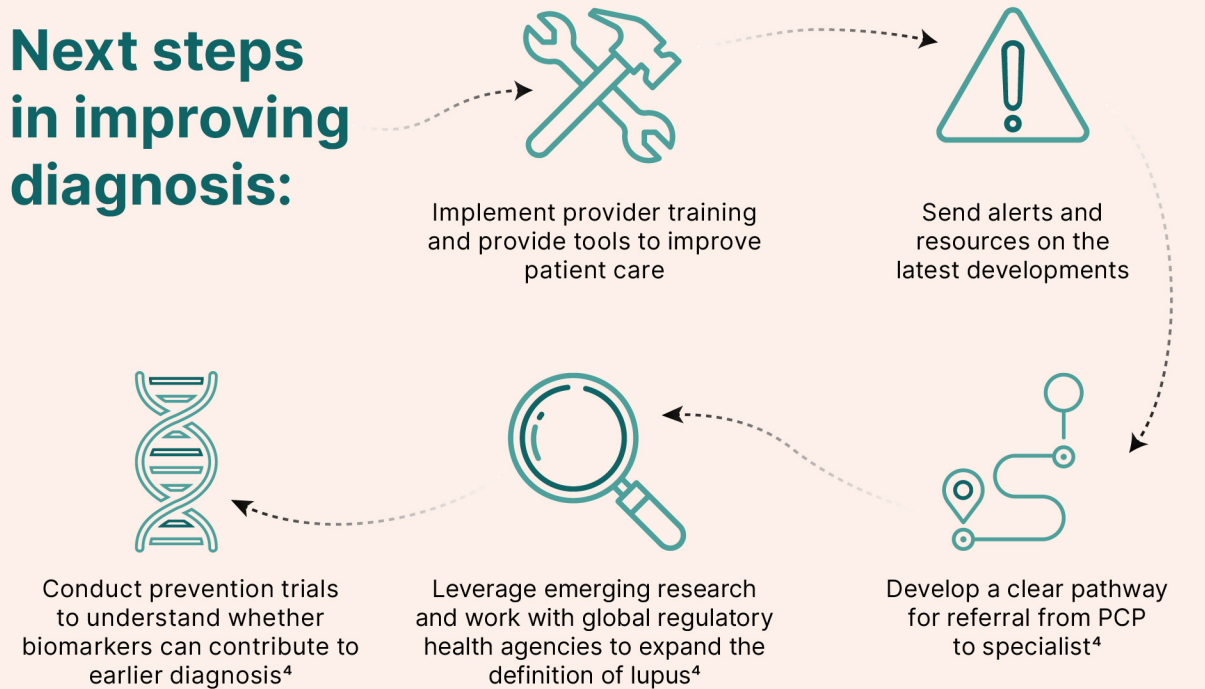
## The Implications of Lupus Diagnosis Ambiguity and Recommendations for the Future



## Clinical Manifestations



## Next steps in improving diagnosis:



### References

1. Tian J et al. Global epidemiology of systemic lupus erythematosus: a comprehensive systematic analysis and modelling study. *Ann Rheum Dis.* 2023;82(3):351–6.
2. Rees F et al. The worldwide incidence and prevalence of systemic lupus erythematosus: a systematic review of epidemiological studies. *Rheumatology (Oxford).* 2017;56(11):1945–61.
3. Justiz Vaillant AA et al. Systemic Lupus Erythematosus [Internet](2023). Treasure Island: StatPearls Publishing. Available at: <https://www.ncbi.nlm.nih.gov/books/NBK535405/>. Last accessed: 21 April 2023.
4. Bruce IN et al. Lupus spectrum ambiguity has long-term negative implications for patients. *Lupus Sci Med.* 2023;10:e000856.
5. Daly R et al. Lupus diagnosis: process and patient experience. 2017. Abstract 1260. ACR/ARHP Annual Meeting, November 6th, 2017. Available from: <https://acrabstracts.org/abstract/lupus-diagnosis-process-and-patient-experience/>. Last accessed: 15 May 2023.